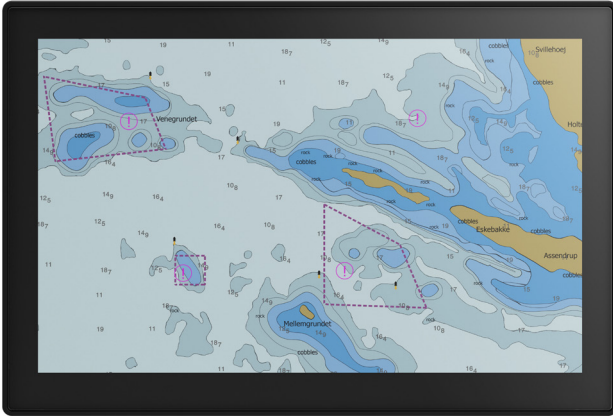


DuraPANEL 10.1" S-Line

Wide Screen Panel PC for Marine Applications



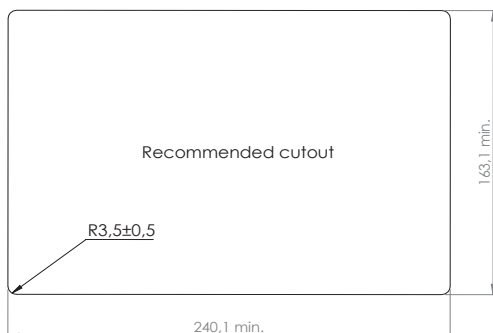
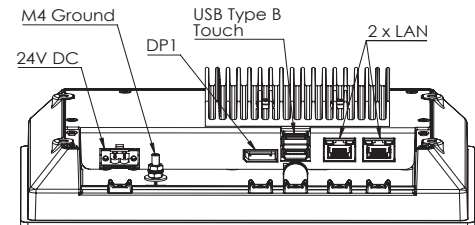
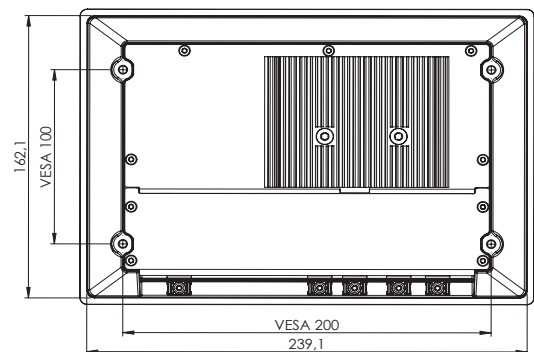
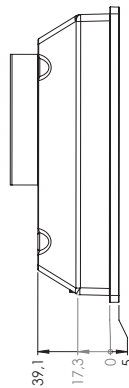
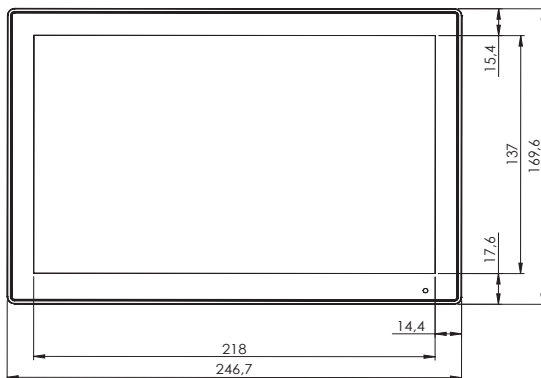
DuraPanel 10.1" S-Line Panel PCはハードウェアに対して信頼性と耐久性が求められる、船舶・海軍等の用途用にデザインされました。

S-Line プロダクトファミリーは、超スリムなデザイン・ナローベゼル・軽量・低消費電力を特徴とする最新且つコストパフォーマンスの高い製品群です。

- ✓ 60945 Type Approval
- ✓ Bridge Applications
- ✓ Control Applications

Mechanical outline

DuraPANEL 10.1" S-Line



Table/ceiling bracket available - ISIC PN OXXXX-000

Specifications DuraPANEL 10.1" S-Line

Display properties

Size	10.1" wide screen
Aspect ratio	16:10
Active area	216.9 x 135.6 mm
Luminance	500 Cd/m ²
Contrast	800:1
Native resolution	1280 x 800
View angle	85° (L/R/T/B) typical
Glass	Anti-reflective and chemically toughened
Touch	P-Cap multi touch

Power supply/power consumption

DC Power	18 - 36 VDC galvanic isolated
Consumption	35 W Max.

Input/output terminals

DP video out	1 x DP++
USB	2 x USB 3.0
Ethernet	2 x Gbit LAN, Intel I211, RJ45

Motherboard

Chipset	Intel® SoC solution
CPU	Atom X5-E3940 1.6GHz 4 cores 4 threads
Watchdog timer	65536 levels, 1 to 65535 sec.
HW monitoring	Temperature, voltage
Wake-on-LAN	Yes
On board graphics	Intel® HD Graphics 500
Graphics supports	DirectX 12 Open GL 4.3 Open CL 2.0

Physical dimensions

Dimensions	247 (W) x 170 (H) x 59 (D) mm
Dimensions in box	343 (W) x 338 (H) x 168 (D) mm
Weight	2.6 kg 3.4 kg in box

Memory and Storage

Memory	Up to 8 GB DDR3L RAM, SODIMM
Storage	1 x M.2 B key 2242

Environmental

Operating temp.	- 15 to 55° C
Storage temp.	- 25 to 70° C
Humidity	8 to 95% relative humidity
Protection	IP56 from front - IP22 from rear
Compass SD	1.6 cm (stand.) 1.0 cm (steer.)

Operator control interface & OSD

Dimming	Windows API
Display properties	Controlled by OS

Options & accessories

console bracket	Console bracket kit (09353-000A)
Table stand short	Table stand short (09313-000A)

OS options

Windows 10	Windows 10 IoT
Linux	Ubuntu

Approvals & Certificates

Marine	IEC 60945 ed. 4 & IACS E10 rev. 8
Certificate	DNV Mutual REcognition - in progress

Basic Jap Japan Co., Ltd. 2-42-26-S110 Amanuma, Suginami-ku
Tokyo, Japan, 167-0032
Phone: (+ 81) 3 5335 7651
mail@basicjp.com | <https://www.basicjp.com/>

BASIC JAPAN

ISIC A/S | Edwin Rahrs Vej 54 | 8220 Brabrand | Denmark
Phone: (+ 45) 70 20 70 77
isic@isic-systems.com | www.isic-systems.com

ISIC TRUSTED HARDWARE SYSTEMS